

Project Examples



North Park Family Dentistry
Grand Rapids, Michigan

Adaptive Reuse, 3,500 sq. ft.

Medical Offices

June 2005

Building Features:

Sustainably Constructed
Dentistry Office in Small
Traditional Business District

Exterior Brick Repointed using
Historically Correct Mortar
Mixture

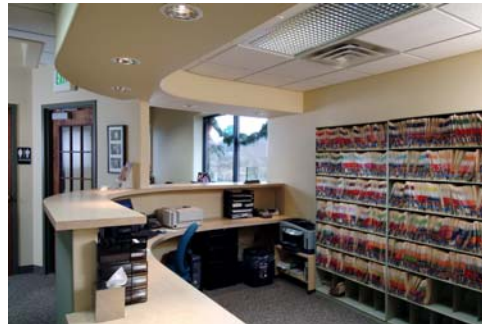
High Level of Indoor Air Quality

Energy Efficient Construction
Techniques Used

Non-CFC Central Air
Conditioning Equipment

Low Off-Gassing: Paints,
Caulks, & Adhesives Installed

Low-Flow Water Fixtures
installed




BAZZANI
Design + Green + Build

959 Wealthy Street SE
Grand Rapids, MI 49506
P. 616.774.2002
F. 616.774.0606
www.bazzani.com